

[www.inaceinox.pt](http://www.inaceinox.pt)



**+ / HISTORY AND ACTIVITY**

WHO WE ARE, WHAT WE DO AND HOW WE DO IT.







## WHO WE ARE

**/ 1988 - INACEINOX – Stainless Steel  
Accessory Industry, SA**

**/ Production and commercialization of  
accessories for the mechanical industry**

**/ 1999 - INACEINOX – Stainless Steel  
Equipment Industry, SA**

**/ A need to diversify and expand its production**

**/ Entrance in foreign markets**

**/ Development of new products and solutions**

**/ 2017 - Westtube, LDA – Related Company**

**/ Production of TIG welded stainless steel  
tubes**





## OUR MISSION

- / Assess and continuously foster client satisfaction.
- / Attain continuous improvement through a suitable and functional Quality Management System.
- / Provide all Inaceinox employees with adequate training in order to develop their full potential.
- / Develop efficient internal and external information and communication systems.
- / Constant innovation.



## OUR VISION

**Inaceinox intends to be perceived as a reference in quality and efficiency:**

- / On its operating platform.**
- / Above average contributions.**
- / Comprehensive offer services.**
- / The ability to compete internationally.**
- / Maintaining ethics and usage requirements.**



## OUR VALUES

**/ Customer orientation: Meeting the needs of our customers.**

**/ Devotion: To work with passion and commitment. To win as a team and having our employees provide the best service offering the best products.**

**/ Trust: Responsible and trustworthy partner, who guarantees everyday commitments.**



## OUR NUMBERS



**100 Employees**



**Exported to 15  
Countries in 2019**



**Over 190 Sale  
Orders in 2019**



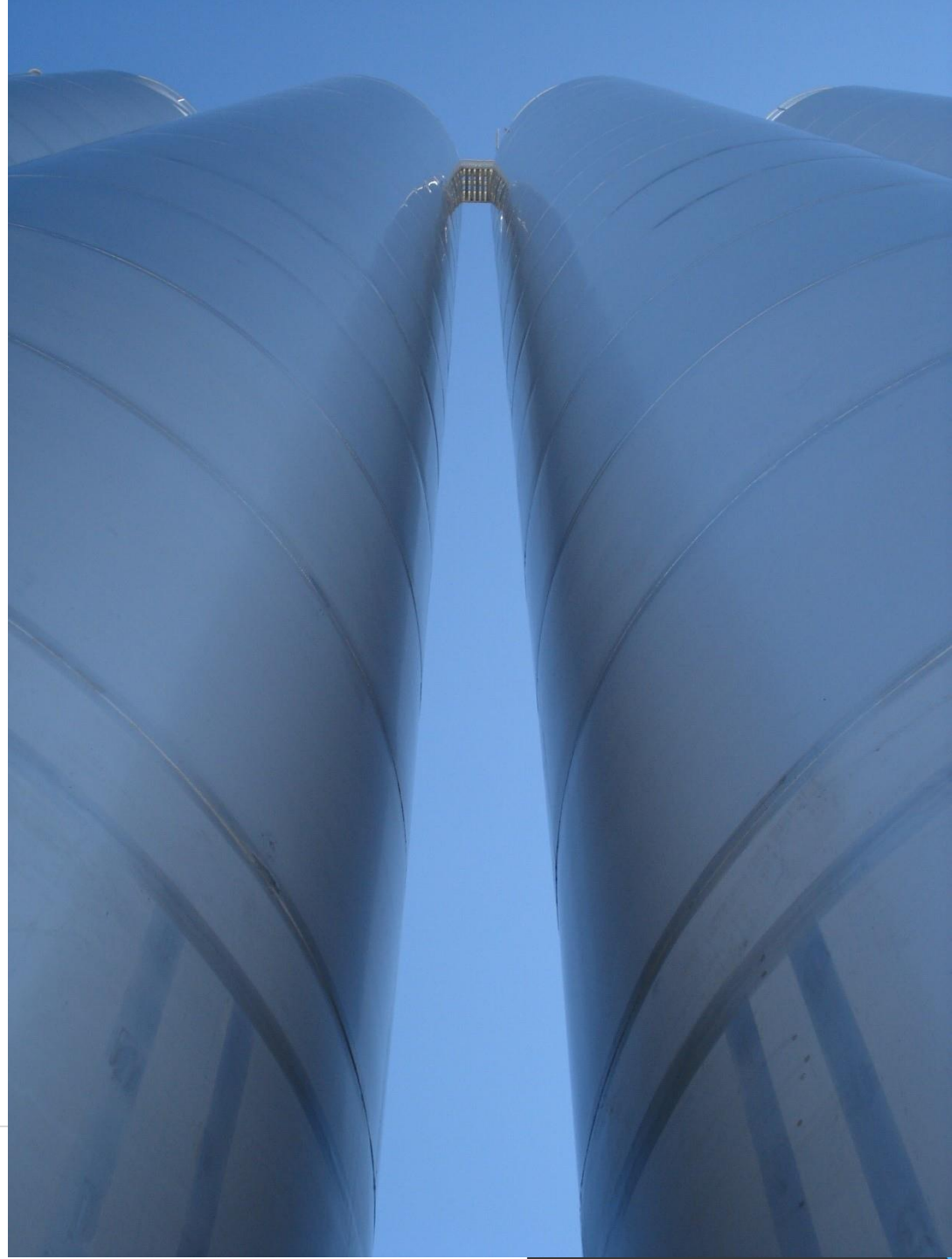
## Quality

### / Materials

- 304 / 304L
- 316 / 316L,
- 316 Ti,
- 310S,
- 253 MA,
- Duplex,
- Super duplex,
- LDX – Super duplex;

### /Construction Codes - Norms

- EN 13445
- ASME
- AD 2000-Merkblattt
- Codap
- Wind, snow, earthquakes, etc.
- Statical, finite elements, etc.
- ATEX
- PED 97/23/CE
- EN 14015
- EN 1090



## Our Work

Supply of process equipment  
and turnkey projects for:

- / Food Industry
- / Chemical Industry
- / PU Foam
- / Plastics & Polymer Industry
- / Pharmaceutical Industry





## PRESSURE VESSELS

- Design, planning and construction of pressure equipment
- Various services
- Various design conditions
- Various types of materials





## HEAT EXCHANGERS

- Shell and tube,
- Double tube,
- Closed tube,
- Spiral
- Helical-coil





## REACTORS / MIXERS

- Simple or multiphase reactors
- Adiabatic and/or isothermal reactors
- Batch or continuous application
- Agitation systems
- Blenders
- High shear mixers.



## SILOS

- Constructed according to EN 1090,
- Design and construction of silos and structures according to the latest industry standards.





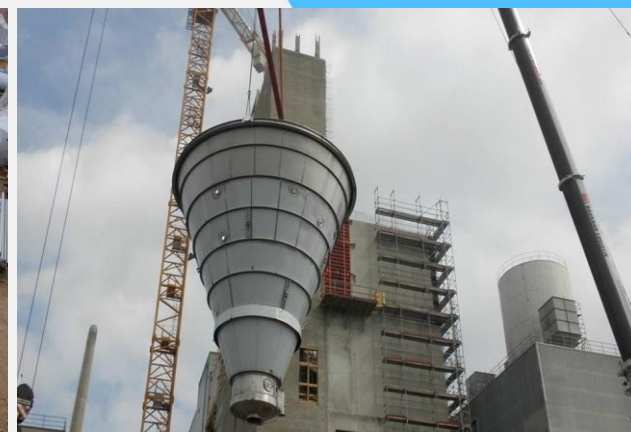
## STORAGE TANKS

- Atmospheric
- Pressurized storage tanks;
- Mobile tanks
- Vertical and horizontal tanks;
- Conical-bottomed, flat-bottomed, semi- and full spherical tanks.



## DRYING SYSTEMS

- Drying Chambers
- Filters
- Air distributors





## COLUMNS AND TOWERS

- Distillation columns
- Stripping columns
- Adsorption columns
- Absorption columns
- Extraction columns
- Evaporators



## AUTOMATION AND CONTROL

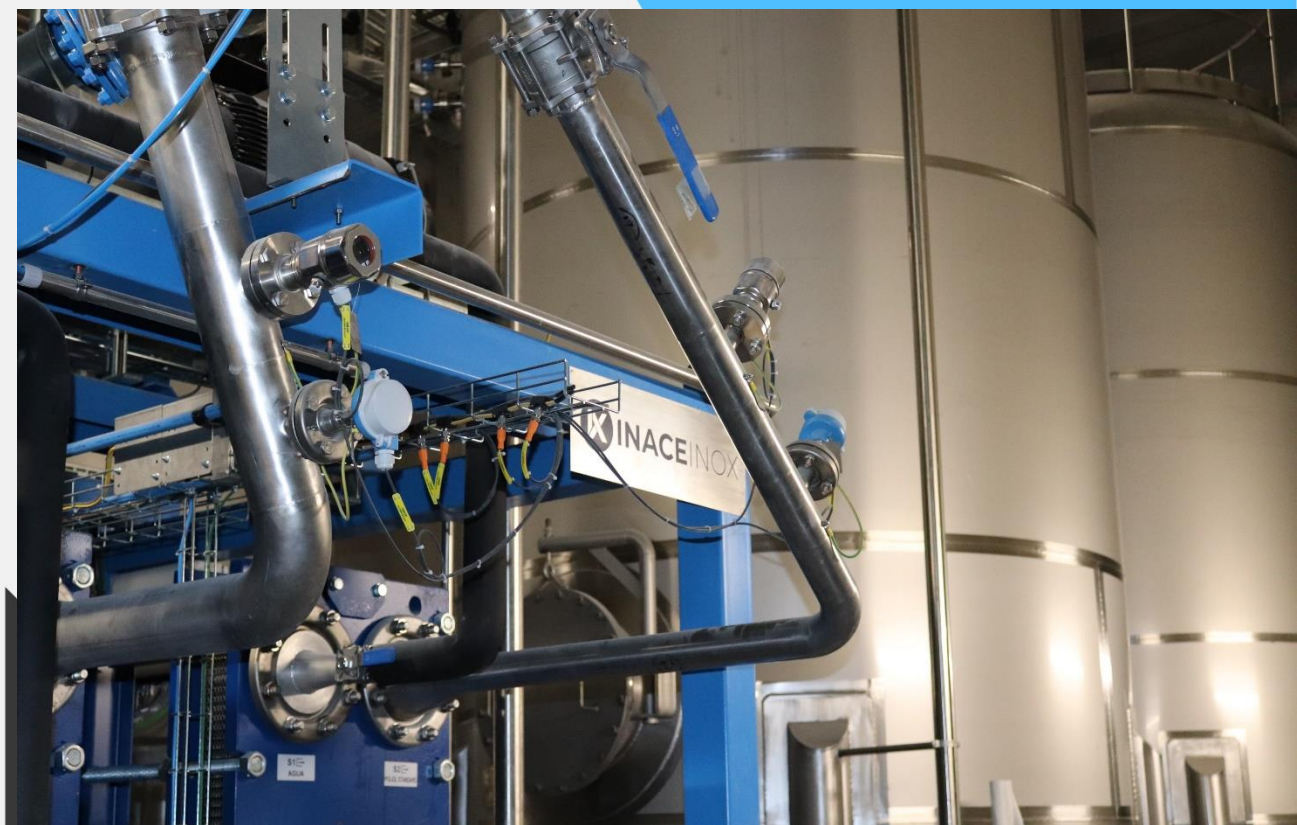
- Modular equipment – “skids”
- Instrumentation and Control
- Automation
- Wiring
- Electrical Panels
- Electrical project

















## QUALITY





## Our references



## Our references









### **Morada**

Rua do Vale de Pereiras, 724  
Lugar da Póvoa - Vila Chã  
Apartado 68,  
3730-901 Vale de Cambra  
Portugal

**Telefone / + 351 256 420 740**

**Fax / + 351 256 423 702**







# / OBRIGADO

**Morada**

Rua do Vale de Pereiras, 724  
Lugar da Póvoa - Vila Chã  
Apartado 68,  
3730-901 Vale de Cambra  
Portugal

**Telefone / + 351 256 420 740**

**Fax / + 351 256 423 702**

---

**[WWW.INACEINOX.PT](http://WWW.INACEINOX.PT)**

Co-financiado por:



UNIÃO EUROPEIA  
Fundo Europeu de  
Desenvolvimento Regional